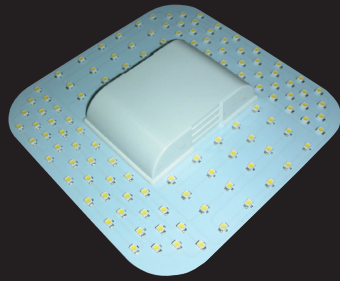


9W, 12W & 18W LED Trays Installation Instructions



For models: E9WLED, E12WLED, E18WLED

This installation must be carried out by an electrician.

Please read these instructions carefully before installation.

Leave a copy for the user/maintenance engineer for future reference.

Specification

- 9W, 12W & 18W LED Trays
- 220-240V, 50/60Hz
- 120-240pcs SMD3528 Epistar Chip Set
- 935-2180 Lumen output
- 30,000 Hours life expectancy
- 2 Year guarantee
- IP20

Product Information

- This product is a direct replacement for traditional 2D compact fluorescent lamps suitable for use with 16W / 28W / 38W 4 Pin fittings.

Before Installation

- This fitting must be installed by a qualified electrician in accordance with the Building and IEE Wiring Regulations.
- It is your responsibility to ensure that the product is fit for purpose for which you have intended it.
- Red Arrow Trading cannot accept any liability for loss, damage or premature failure resulting from inappropriate use.
- This product is designed and constructed according to the principles of the appropriate British Standard and is intended for normal domestic use. Use of this fitting in any other environments for example; where prolonged periods of use or higher than normal ambient temperatures, may

result in a shortened working life.

- Switch off the mains before commencing installation and remove the appropriate circuit fuse or lock off MCB.

Installation Instructions

- Our 2D LED Retrofit replacement lamp range is to replace fluorescent 2D lamps with magnetic ballast. First remove the starter and any power factor capacitor, then plug in the 2D LED lamp directly into the lampholder.
- If the 2D fitting has an electronic ballast, remove the electronic ballast from the circuit, and then plug the 2D LED lamp directly into the lampholder.

REPLACING THIS PRODUCT

EVENTUALLY YOU MAY WANT TO REPLACE THIS PRODUCT:

- Regulations require the recycling of Waste from Electrical and Electronic Equipment (European "WEEE Directive" effective August 2005 - UK WEEE Regulations effective 2nd January 2007). Environment Agency Registered Producer: WEE/GA0248QZ.

WHEN YOUR PRODUCT COMES TO THE END OF ITS LIFE OR YOU CHOOSE TO REPLACE IT, PLEASE RECYCLE IT WHERE FACILITIES EXIST - DO NOT DISPOSE WITH HOUSEHOLD WASTE.

Warranty

- This unit is guaranteed for 2 years.
- Any modifications made by anyone other than the manufacturer could render the unit unsafe and invalid the warranty.
- Contact us if the unit is found faulty.



Product is suitable for mounting on flammable material



Product complies with all relevant European standards

Guarantee

This product is guaranteed for a period of 2 years from the date of purchase. The guarantee is invalid in the case of improper use, tampering, removal of the Q.C. date label, installation in an improper working environment or installation not according to the current edition of the I.E.E. Wiring Regulations (BS7671). The guarantee is also invalidated if the luminaire has been Mega tested. Should this product fail during the guarantee period it will be replaced free of charge, subject to correct installation and return of the faulty unit. We do not accept responsibility for any installation costs associated with the replacement of this product. Your statutory rights are not affected. We reserve the right to alter specifications without prior notice.